

Issue
Apr 25



Mawsley Newsletter

May 1st

Elections

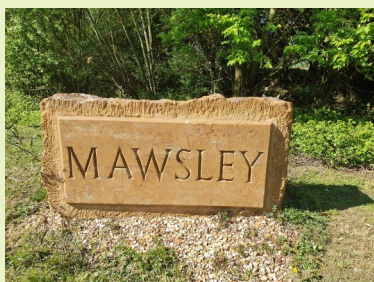
Don't forget to vote



North Northamptonshire Council

After May 1st there will be a new NNC.

Make your vote count



Mawsley Parish Council

After May 1st there will be a new MPC

The MPC looks represents the interest of the residents of Mawsley Village.

There are 7 councillors on the MPC.

From the Editor

The Mawsley Villagers Association and the Centre at Mawsley will be holding their Annual General Meetings in May, the date will be announced shortly.

The AGM is an opportunity to hear what each organisation has done in the past year and what are their plans for the future.

You have an opportunity to put your suggestions forward; for example:

- How can the MVA help make Mawsley a better place to live
- What can the Centre do better
- Suggestions to improve the Centre

Both organisations are looking for new members so if you are interested in helping Mawsley Village why not come along and learn a little bit more about what they do.

In the meantime if you would like to understand more about either organisation please make contact with the Centre team and they will arrange for someone to talk to.

The Centre at Mawsley Goes Green

The rise in the cost of utilities is effecting everyone including The Centre at Mawsley. The Centre uses gas for the underfloor heating system and the hot water and electricity for lights, computers, fridges, dishwashers etc. The Centre's contract for electricity was renewed in November 2024 and showed a 57% increase in cost. The gas contract was due for renewal March 2025 and we expected another increase in the cost. The increase in the cost of the utilities is having a huge impact on the financial sustainability of the Centre.

Last year the team at TCAM decided that something needed to be done not only to reduce the cost to heat and light the Centre but also to do our bit re climate change. We applied for a Government grant and were awarded an independent energy assessment that identified a series of actions to be taken. With the help of a government grant and funding support from the Parish Council, the owners of the building, we have been able to complete a significant part of the improvement plan.



A series of heat pumps have been installed to fuel the underfloor heating and heat hot water for the kitchen, toilets and showers. This removes the need for a gas supply and the contract has not been renewed. Heat pumps use more electricity and therefore we have installed solar panels to provide the energy to run the pumps. To better use the underfloor heat fans have been fitted in the hall to circulate the heat. These measures will move the Centre towards self sufficiency - not only making a significant reduction in emissions but saving us money as well.

We continue to look for other measures to reduce our energy demands and when funds allow we can cover the lighting to LED and fit better system controls on the heating and lights. Watch this space!

LOCAL, FRIENDLY & PROFESSIONAL
ACCOUNTANCY PRACTICE

Michael
Paul

accountants



01604 686152

www.mpaccountants.co.uk





Website: churchesbmc.org
Facebook: cransleymawsleychurch
Instagram: bcm_benefice

We would love to welcome you to Mawsley Church one week. We meet at TCAM on the 2nd and 4th Sunday of each month at 11am for about an hour. Most weeks there is also Sunday Club with activities for children. We are linked to Cransley and Broughton Churches, so there are services you can attend every week.

There are plenty of other events happening too - so to be added to our email or postal list, please contact Revd Nicki Hobbs on 01536 799522 or revnicki@familyhobbs.org.uk

Finally, if you would like a prayer, a listening ear, or would like to book a christening, wedding or funeral, please get in touch.



Join us for
**Easter
Crafts**

at The Centre at
Mawsley

Tuesday
15th April
2-3:30pm



Mawsley Coffee Club



Mawsley Coffee Club was established in 2025 as the village was being built. We meet once a month in the bar area at The Centre, mostly on Thursday mornings. It was established as a group for village residents who have retired, or are approaching retirement.

Of the seven ladies who initially responded to a leaflet drop inviting them to a coffee morning, six of those seven joined with almost forty of our members to enjoy a celebratory lunch at The Olde Victoria restaurant in Burton Latimer in February.

At Mawsley Coffee Club, we endeavour to provide an informal programme of interest to as many of our members as possible. We aim to have some fun and invite speakers who share various topics of interest with us. In March, we invited a representative from Age UK Northamptonshire to update us on some of the services provided by this organisation. Next month, we are looking forward to welcoming Mel from Glitter Bitz to talk about crafts and gifts available from her new business venture in the village.

Further details of Coffee Club events are listed on the notice board at TCAM, or are obtainable from Molly Shortt Ph: 790 781, or Jean and David Wilson Ph: 799 490 Please phone us if you'd like to know more about the Coffee Club's programme for this year.

A warm welcome is assured. Happy Easter!

Fundraising Plans for a New Village Skatepark

Building on efforts from last year, fundraising plans are underway for a brand-new skatepark in Mawsley, and we're excited to bring this much-needed facility to our community. A skatepark will not only provide a fun, safe space for our young people but also offer an opportunity for everyone to enjoy outdoor activities together.

But we can't do it alone – we need your support to make this dream a reality. We are currently raising funds for the project, and every donation, no matter the size, will bring us one step closer to building the skatepark. If

you'd like to contribute, please consider making a donation at any of our upcoming fundraising events or online. To donate, you can scan the QR code or visit:

<https://www.goodhub.com/go/skatemawsleyproject>.

You can also join us at Mawsley Fun Day, where we hope to revive the crockery smash stall and offer other exciting activities for all ages. It's a great chance to have fun, get involved, and help raise money for the skatepark at the same time! We are looking for volunteers to help with fundraising efforts, so if you'd like to pitch in, please reach out to us - you can find us on Facebook: SkateMawsley.

Together, we can create a fantastic new space for our community. Thank you for your support! Let's skate into a brighter future!

Skate Park Mawsley



Scan to
Learn more
Fundraise
Donate



**WORKING TO TURN
THIS INTO THIS**



Support us - Find us on Facebook - Follow - Like

OVEN REVIVE

OVEN CLEANING AND REPAIRS.

**We work 7 days a week.
We have been established
for over 12 years.**

**Call us now to book on
07545254975**

Call us today

**PLEASE SEE OUR WEBSITE
FOR MORE INFORMATION**

**www.ovencleaningcorby.org.uk
Email: paul@oven-revive.com**





We are looking for a pianist to accompany us at rehearsals Thursday 7-30 at the Centre at Mawsley. We aim for a couple of concerts a year; Summer and Christmas time.

We also invite new members especially Soprano and Bass, Alto and Tenor will be made most welcome too.

So if you like to play or sing and have some fun please contact our secretary on:

07960 754459

Mawsley Book club

We meet on the 4th Wednesday of the month at 19.30 for ~ 2 hrs at The Centre, We try to keep books under £5, that is the only outlay as the meetings are free.



We welcome, and look forward to anyone who would like to join us.



Ashbourne
Day Nurseries

Care • Nurture • Teach

at Mawsley

Looking for high-quality childcare in Mawsley? At Ashbourne Day Nurseries at Mawsley, we provide a safe, nurturing, and engaging environment where children can learn, grow, and thrive.



Caring and Experienced Staff

Our dedicated team of childcare professionals are passionate about providing a warm, supportive environment where every child feels valued and encouraged.



Exciting Learning Activities

From messy play to early literacy and numeracy, our curriculum is designed to spark curiosity and a love for learning through play.



Funded Childcare Available

We offer 15 and 30 hours free government funded childcare options for eligible families, making high quality early education more accessible.

**OPEN FOR
REGISTRATION!**



Visit Our Website
www.ashbournedaynurseries.com



Our Location
14 Barnwell Court, Mawsley, NN14 1FG

News & Events - Mawsley WI

Happy Easter and a warm welcome from Mawsley WI. Spring is in the air and our committee has sprung into action by organising a coach trip to Sandringham Flower show which takes place in the grounds of the Royal residence and estate in Norfolk on **Wednesday 23 July 2025**. King Charles and Queen Camilla are patrons and are usually in attendance.

The show features display gardens by leading designers, around 200 trade stands (both horticultural and general), a craft marquee, main arena events- such as parachute jumps, children's entertainment, and a military band.

A walk around the grounds and gardens is necessary along with a visit inside the beautiful church and of course - the gift shop.

You can take a picnic but there are many food and drinks outlets available and loads of space to enjoy a lovely day out.

A poster for the Sandringham Flower Show Coach Trip. The title 'Sandringham Flower Show' is in a large, elegant, orange-brown font. Below it, 'Coach Trip' is written in a smaller, purple, cursive font. The date 'Wed 23 July 2025' is in a bold, black, sans-serif font. Below the date, it says 'Organised by Mawsley WI'. There is a list of bullet points: '£40pp to include coach & entry ticket', 'Leave bus stop at Barnwell Court, Mawsley, NN14 1GY, at 8am.', 'Leave Sandringham at 3.30pm', 'Mega hamper to be won. Tickets for sale on board coach.', and 'To book phone Gill on 07919 533216.' Below the list, it says 'Payment required when booking please' and 'Closing date 31 May'. The poster is decorated with pink and white flowers on the sides and bottom.

Sandringham
Flower Show
Coach Trip
Wed 23 July 2025
Organised by Mawsley WI

- £40pp to include coach & entry ticket
- Leave bus stop at Barnwell Court, Mawsley, NN14 1GY, at 8am.
- Leave Sandringham at 3.30pm
- Mega hamper to be won. Tickets for sale on board coach.
- To book phone Gill on 07919 533216.

Payment required when booking please
Closing date 31 May

We will be selling tickets for our bumper raffle prize onboard the coach and as HRH says that Wi-Fi reception is poor in the area we suggest you take cash for making purchases. Full information for visitors to the show is on the *Sandringham Flower Show website*. If you would like to join us - book your seat now by phoning Gill on 07919 533216.

See poster opposite or phone for more details.

Up Next: -

Our WI meetings for the next few months are noted below – hope to see you soon. Visitors are always welcome. Our meetings are held in the village hall and start at 7.30pm and last until 9pm. Visitors fee £5.

9 April 2025 Voting on WI Resolutions. Talk by KGH volunteer plus make your own unique bookmark.

14 May 2025 Northamptonshire Walks. Great insight into many walks around the county by Dave Askew.

11 June 2025 Honeybees & Beekeeping. Learn all about the skill of an Apiarist from Julia Wallis.

28 June 2025 Mawsley Village Fun Day. Visit our cake stall for some delicious cake!

9 July 2025 Great Women of Conflict – Lucy Hay – known for beauty & wit. Intriguing talk by Philip York.

Gardening For All



We are a friendly group who enjoy gardens and gardening in a very amateur way. Our monthly meetings are held at TCAM in the winter and out and about in Spring and Summer. We are open to anyone who shares our interest. There is no membership fee. Our TCAM meeting charge is just £2.50. We car share for our outings and the cost varies depending on the venue.

In February two of our members gave an illustrated talk about the gardens they have created as they have moved from house to house, ending with their glorious garden in Mawsley. In March it was the turn of all present to share their gardening tips or learn from others in preparation for the new gardening year. We showed off our most useful garden tools, gadgets and gizmos and swapped seeds, young plants, magazines and books.

Coming up next, on **Wednesday 16th April, is an all day outing to Springfields Festival Gardens** at Spalding where the Head Gardener will show us round. We will book lunch for those who would like it and then have free time to return to the gardens or for the Springfields Outlet Shopping Centre. Website: springfieldsoutlet.co.uk.

The next visit will be in the afternoon of **Tuesday 13th May to The Green Patch Community Garden** in Kettering to see the work being done there to provide facilities and support for the local community. Website: greenpatch.org.uk

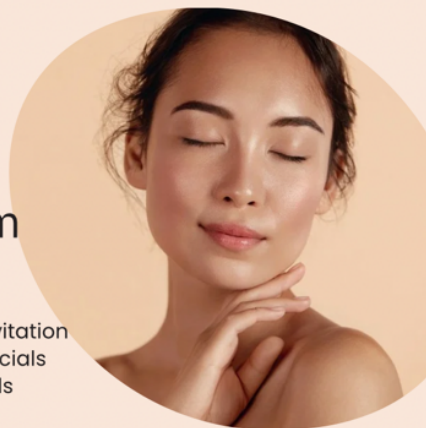
In June we will spend an afternoon visiting a few **gardens in Mawsley** ending with refreshments in one of them. **The University of Leicester Botanic Garden is our destination on Thursday 17th July** for an afternoon guided tour and refreshments. Website: le.ac.uk/botanic-garden

If you would like to join us on any of these visits, please message Pat on 07738 294533. If we don't see you then, please come and visit us at our stall at **Mawsley Fun Day on Saturday June 28th**.

THE TREATMENT ROOM

Beautiful Skin
Starts In The
Treatment Room

Now Open for Bookings
Facials / Radio frequency / Cavitation
LED Light Therapy / Hydro O2 Facials
Micro Needling / Chemical peels



Mawsley Football Club

The football season will soon over and the dark nights and wet weekend will be replaced by the sound of leather on willow or the sizzle of sausages but at Mawsley Youth Football Club we still have lots to play for and celebrate. This year we had a new U6s mixed team start and at the other end of the age groups we will see players move on who have been together since they were U6.



Each year the standard of football continues to grow, and we appreciate all the coaches who volunteer their time to develop players. As a result we have a number of teams in the hunt for silverware such as the Wasps U11s and Tiger U13 Girls, and the Marvels, U13s, Avengers U13s, Lions U16s and the Jedi's U18s Mixed.

TEAM SPOTLIGHT

Mawsley U10 Raptors are off to a great start in 2025 in the Nydal Premiership League!

The Raptors are undefeated in all 8 games since Christmas with 2 Draws and 6 Wins! Half of these games have been clean sheets.

Most importantly there have been goals and assist contributions throughout the team and the squad has taken huge strides in developing their passing game and playing with intensity and positivity!

Keep it up Raptors!

England Football Accredited

We're proud to announce that the club has been awarded **2 Star England Football Accredited Club** status. England Football Accreditation is the new framework to accredit Leagues and Clubs and replaces the FA Charter Standard. Being Accredited shows that the club is committed to providing a fun, safe and inclusive environment for players, spectators and volunteers, to operating sustainably, and to continually raising the bar for clubs in their communities.

Welcome to the White Horse Golf Society



We're a group of golfers who believe the game should be as much about having fun as it is about hitting great shots. Whether you've been playing for years or you're just starting out, our society is a relaxed, friendly space where everyone's welcome.

We keep things simple. We're here to enjoy the game, meet new people, and share a few laughs along the way. No pressure, no pretension – just a chance to get out on the course and have a good time with like-minded people in a relaxed setting.

What We Do

Regular Meet ups:

Casual rounds at a variety of local courses.

Friendly Competitions:

These are all about having fun.

Away Days:

Once in a while, we plan trips to courses a little further afield.

Why Join Us?

Interested? We'd love to hear from you! Drop Martin a message on 07739539698_or join us for an upcoming round to see what we're all about.

Exciting Fundraising News!

We're thrilled to announce the creation of our brand-new Fundraising Team! As a club that's passionate about nurturing young talent, building community spirit, and fostering a love for football, we have some exciting plans for the future. But we can't do it alone—we need your support!



Our vision is to enhance the experience for every player and supporter by investing in new equipment, improving our facilities, and creating opportunities for tournaments and events. From upgrading our training gear to maintaining our pitches and ensuring every child has access to the best resources, your help can make a lasting impact.

Our Fundraising Team is already buzzing with ideas for events and initiatives to bring our community together while raising the vital funds we need. Whether it's fun runs, raffles, charity matches, or larger-scale community projects, we're committed to making these efforts enjoyable and inclusive for all.

If you share our passion for football, community, and making a difference, we'd love for you to get involved! Whether you'd like to contribute your time, ideas, or resources, your support would mean the world to us. Please get in touch with **Dan Stanbury** to find out how you can be a part of this exciting journey.

Together, we can ensure Mawsley Youth Football Club continues to thrive and inspire for years to come. Thank you for your continued support!

Thanks Dan (07930 999 339)

If you want to get in touch please send us a message via the Facebook Group:

MAWSLEY YOUTH FOOTBALL CLUB

India 2 Mawsley

*Contemporary Indian & Bangladeshi
Takeaway*

TEL: 01536 791108/791018

**2 BARNWELL COURT, MAWSLEY
NORTHANTS NN14 1FG**

www.india2mawsley.com

Est. 2010

Who: 1st Mawsley Scout Group
What: Cubs and Scouts
Where: Meet in the Main Hall at TCAM
When: Tuesdays (term time) – Cubs 18.10–19.25 hrs,
Scouts 19.30–20.45hrs



1st Mawsley Scout Group

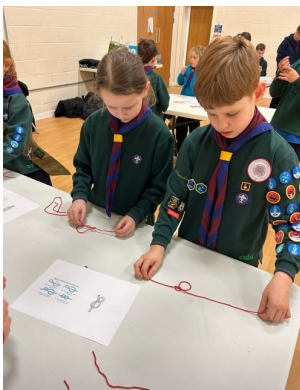
The Group started back after the Christmas break with our deferred Christmas outing - sole use of Lazer Maze in Wellingborough! Cubs and Scouts had a brilliant time - made even better with the provision of pizza, fries and unlimited drinks. A great way to start the year!

As part of the Faith Badge, Cubs visited the Sri Guru Singh Sabha Gurdwara Sikh temple in Kettering. They went into the prayer room and were given a demonstration of a prayer reading by a Granthi (who leads prayers and recites scriptures). He also explained and interpreted the meaning of the prayer for the Group.

Scouts hit the aisles of Sainsbury's in Kettering. Working in groups they memorised items on a shopping list (toiletries for mum and baby) and bought the items whilst keeping to a budget. The items purchased were donated to a Baby Basics Charity. A second challenge was undertaken which involved sourcing specific products (again to a budget) and these items were later donated to the Food Bank.



Chinese New Year meant the Scouts learnt how to write "Happy New Year" in simple Chinese characters, and practised their chop stick skills with mini marshmallows. They also had the opportunity to learn how to make spring rolls. The Cubs took part in chop stick relay races, and learnt facts about Chinese New Year. Dragons were made and the Cubs had the opportunity to sample snake sweets (this being the year of the snake of course!)



Always looking for innovative ways to keep things interesting and engaging – Leaders provided strawberry laces so that the Cubs could use these to practise and refresh previous knowledge on the art of tying knots. Cubs also worked on their Artist Badge by producing posters highlighting what they liked about Cubs.

Global issues formed the mainstay of another informative evening where the Scouts looked at global health (Covid pandemic); natural and physical hazards (climate change), global trade (where do our clothes come from?), and current geopolitical hotspots. This facilitated proactive discussions in each area.

The Group had the pleasure of welcoming speakers from the Naseby Battlefield Project. It was a very informative evening and formed part of their outreach programme to youth groups in advance of the 380th anniversary of the battle this June.



From making bows and arrows (science badge), to doing experiments using vinegar, bicarbonate of soda, coke and mints, making spaghetti towers, taking part in the Monopoly Run in London and traditional camp weekends - there are always loads of activities that we offer our Cubs and Scouts. If you have any children that wish to join our Group - Scout Troop (10¹/₂–14 years), or Cub Pack (8-10¹/₂ years of age), or if you have what it takes to be a Leader/Helper then drop an email to mawsleyscoutgroupenquiries@gmail.com.



Even today physicists are not sure what actually happens when time passes. While the passage of time was already known to be closely connected to space, Albert Einstein's theory of *special relativity* was the first to combine space and time into a single field and opened a whole new discussion, fortunately space does not permit any further examination of this in the Mawsley Village Newsletter!

To continue, what time does the next train leave Kettering for London Saint Pancras? A simple enough question these days, we need only to check the timetable, and then look at a watch, a mobile phone or a clock. Prior to the late 19th century, it was not quite that straightforward, particularly if you were needing to catch a train. Railway operators based their timetable on the time at which the sun was immediately overhead (solar time) in their location. This meant that a train departing from Bristol at 10.00 and a train departing from a London terminus at 10.00 would be departing at slightly differing times – 11 minutes earlier for the London train. Many railway stations had their own timetables with arrivals and departures based on the time at their location. Passengers found times quoted were not necessarily the time that their own timepiece indicated. Train Drivers kept finding themselves in slightly different time zones when their trains arrived at railway stations as they traversed the country. We cannot imagine today, having to adjust your watch every time a train journey took you through another town or city.

The increasingly popularity of railway use resulted in a corresponding increase in the number of trains using the tracks and the resulting danger of collisions with trains not all running to a standard timetable. The Science Museum cites an 1840 instruction from The Great Western Railway that ordered all stations on the line from London to Southwest England to use London time. The functionality of this edict led the way to the eventual adoption of London Time as the standard for all railway timetables. The standardisation made a huge impact on daily life. Most public authorities, including town halls and churches, used railway time by 1855. Station masters would check and adjust their clocks according to telegraph signals from Greenwich. The use of accurate time measurement became essential to the travelling public and brought a great deal of extra safety to the railways.

In America a similar confusing situation was evident, compounded by the size of the country and the extensive use of single-track railways. Railway accidents were frequent and often resulted in considerable loss of life.

An international conference was held in Washington DC in 1884. That meeting further revolutionised time keeping, a momentous decision was made – split the world into 24 separate time zones, based on the Greenwich meridian. What we now know as Greenwich Mean Time was born.

It is fair to say that the railway revolutionised travel and, in addition to that, changed the way we told time forever.

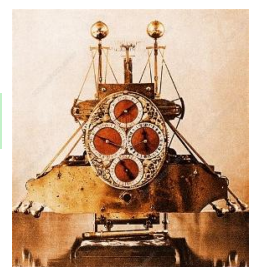
WHAT ABOUT TELLING THE TIME AT SEA? The Master of a vessel at sea was able to tell how far north or south of the equator they had travelled by measuring the altitude of the sun at noon. The position of the vessel, east or west, was a greater challenge. Getting a clock to work accurately at sea was also very difficult. If the clock was a few seconds fast or slow, the vessel could be many miles off course. Determining their longitudinal position presented a somewhat greater challenge. What was needed was a clock that would work accurately at sea.

John Harrison, a working-class clock maker from Yorkshire, solved the problem of longitude by inventing a timepiece that could tell the right time at sea. His chronometer, H4, built in 1759 was able to withstand varying temperature, pressure and humidity and proved reliable enough to be used for navigational purposes. A further problem remained, noon in London was not necessarily noon in say the Indian Ocean. Fortunately, the conference held in 1884 led to the adoption of 24 world time zones. This meant that the position East or West of every place on earth could be established by reference to the distance from the Prime Meridian running through Greenwich.



Clock Maker, John Harrison
Born 3rd April 1693
Died 24th March 1776

A John Harrison Chronometer



SPRING/SUMMER AT THE CENTRE AT MAWSLEY

Hot Drinks

Available everyday
from 9am

Our hot drinks menu is bigger than you think!
We do Iced coffees with Syrups and decaff machine coffee.
our menu includes:

- Cappuccino
- Latte
- Mocha
- Espresso
- Hot chocolate

and many more!

The Syrups we sell are:

- Caramel
- Vanilla
- Hazelnut



Drink in or take away!

Comedy Night

Its what you've all been waiting for!
The Comedy Crate will be here holding
a comedy night on Friday 16th May!



Put the date in your diary and watch
our socials for further information

Easter



The Centre will be holding our annual Easter Egg
Hunt on 20th April! Bring along the family 12pm-
2pm for fun and chocolate, tickets available
from the bar - £3.50 each.

Flopsy Bunny will be in attendance to say
thankyou to all who helped her find her friends!

There will be a colouring corner and an Easter
bonnet competition! Following their easter egg
hunt there will be childrens bngo in the hall at
2pm. And don't miss the easter day meat raffle
at 3pm!

On Bank Holiday Monday 21st April we have our
Mega Jackpot Bingo!! Stay Tuned for more
details!

You may have noticed, we have
recently had some work done.
We have had destratification fans
installed in our main hall to push the
heat down and back into the hall rather
than it escaping through the roof.
We have had heat pumps and solar
panels fitted to drive down our energy
costs making us a greener business
and helping us control costs.

Fans, Heat Pumps &
Solar Panels



Hiring the Hall, Meeting room and other services

Along with being a fully stocked bar, we also hire
out our main hall and meeting room for a number
of occasions!

We have a Marquee we can put up inside the
main hall, Urn Hire, Kitchen Hire, Projector Hire
and much more.

Call us on 01536799528 Or Email
bar.manager@thecentreatmawsley.co.uk for
more details.

Fun-Day

We are in full swing planning funday
2025!

This year we are holding it slightly
earlier on 28th June.

We have already had some stalls
confirm and lots of entertainment
confirmed!

Always a great day - even better with
some sunshine, so lets keep our finger
crossed!



Find us on Social Media



[Thecentreatmawsley](https://www.facebook.com/Thecentreatmawsley)



[tcam_bar](https://www.instagram.com/tcam_bar)



www.thecentreatmawsley.co.uk